

# MIMAKI QUICK-START GUIDE FOR 2.008 THERMOFORMER GRAPHICS

*Version 1.0*

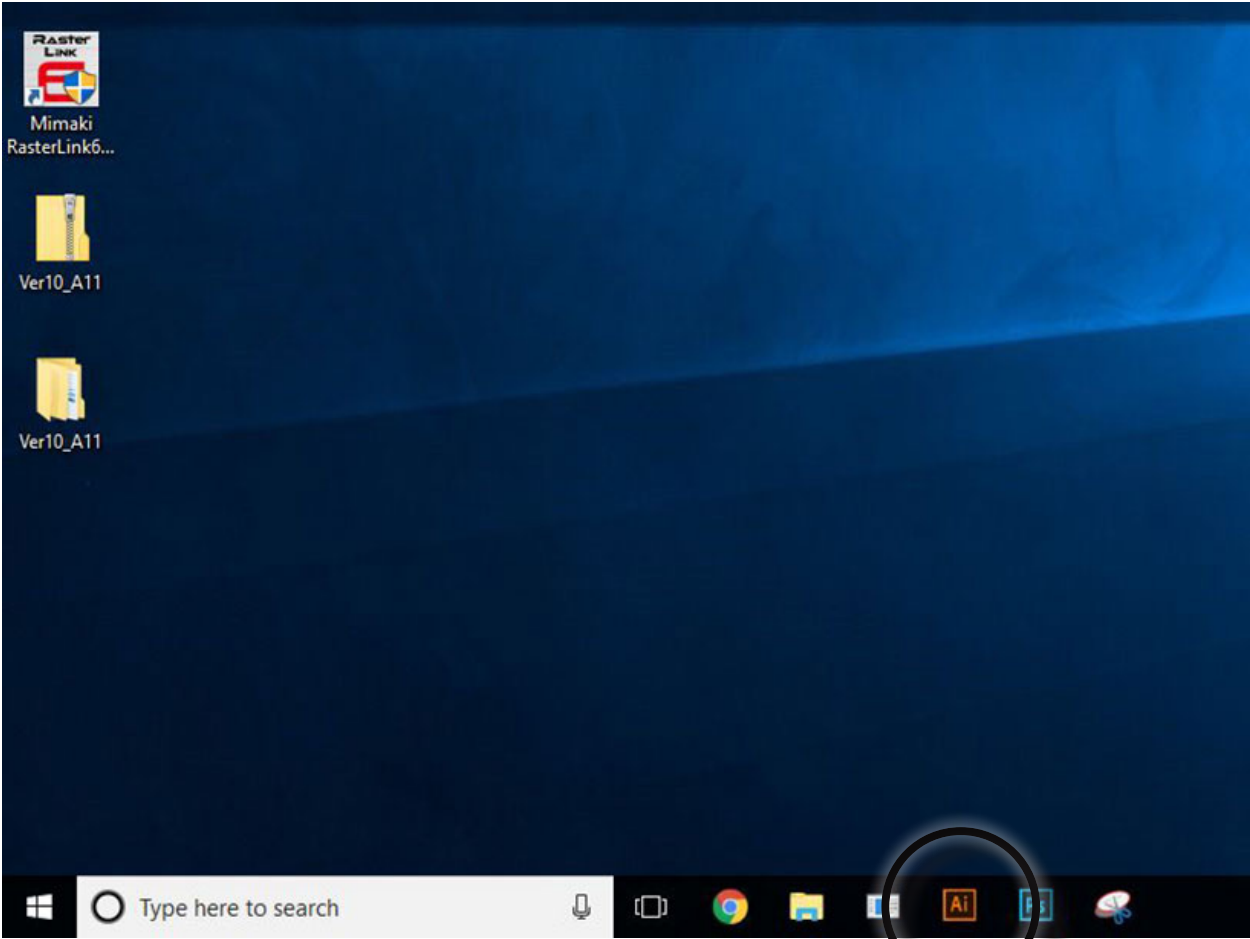
*10/29/2019*

## ***INTRODUCTION***

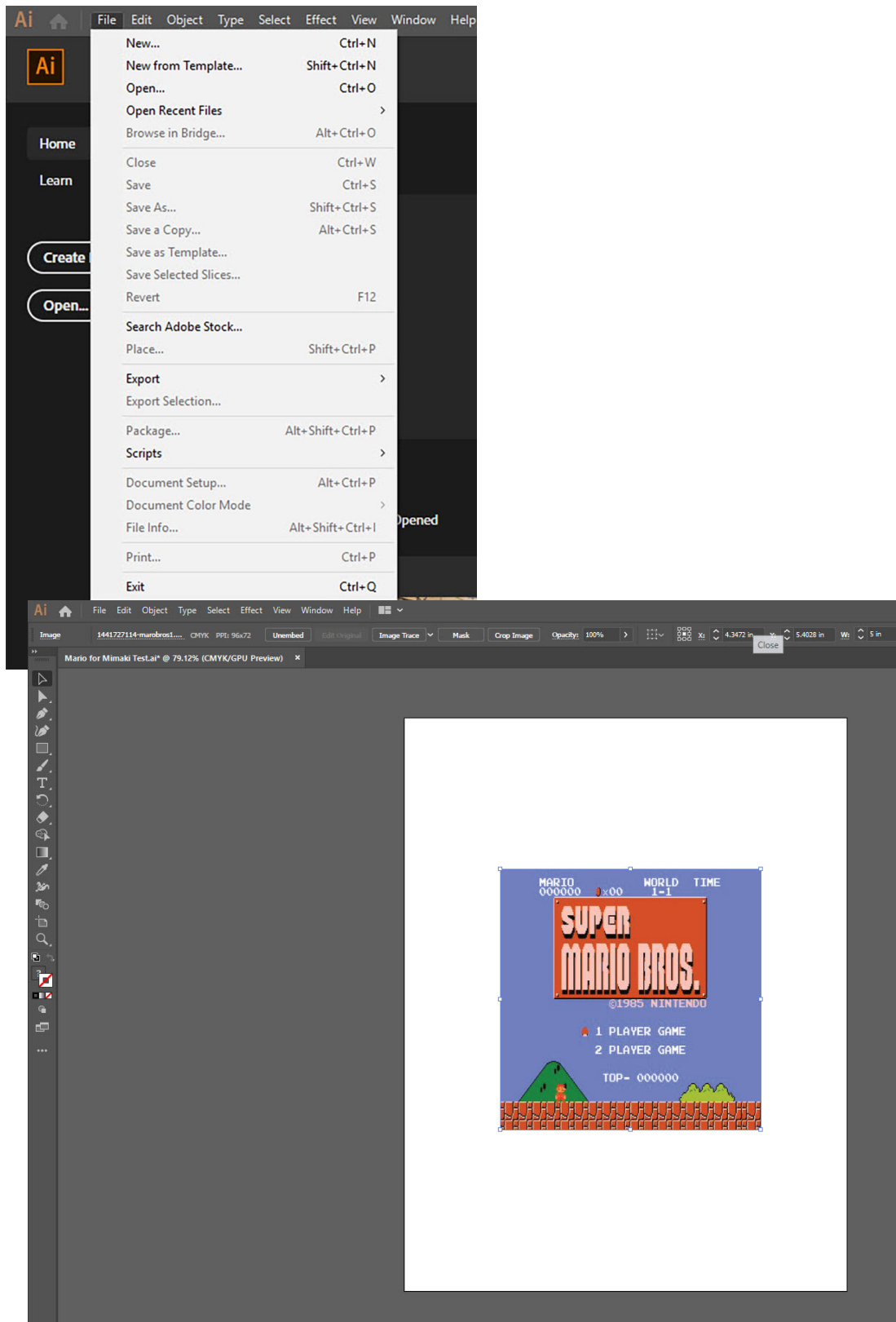
To successfully add graphics to your thermoformer material, you will need to use both Adobe Illustrator as well as Raster-Link software

**IN ADOBE ILLUSTRATOR**

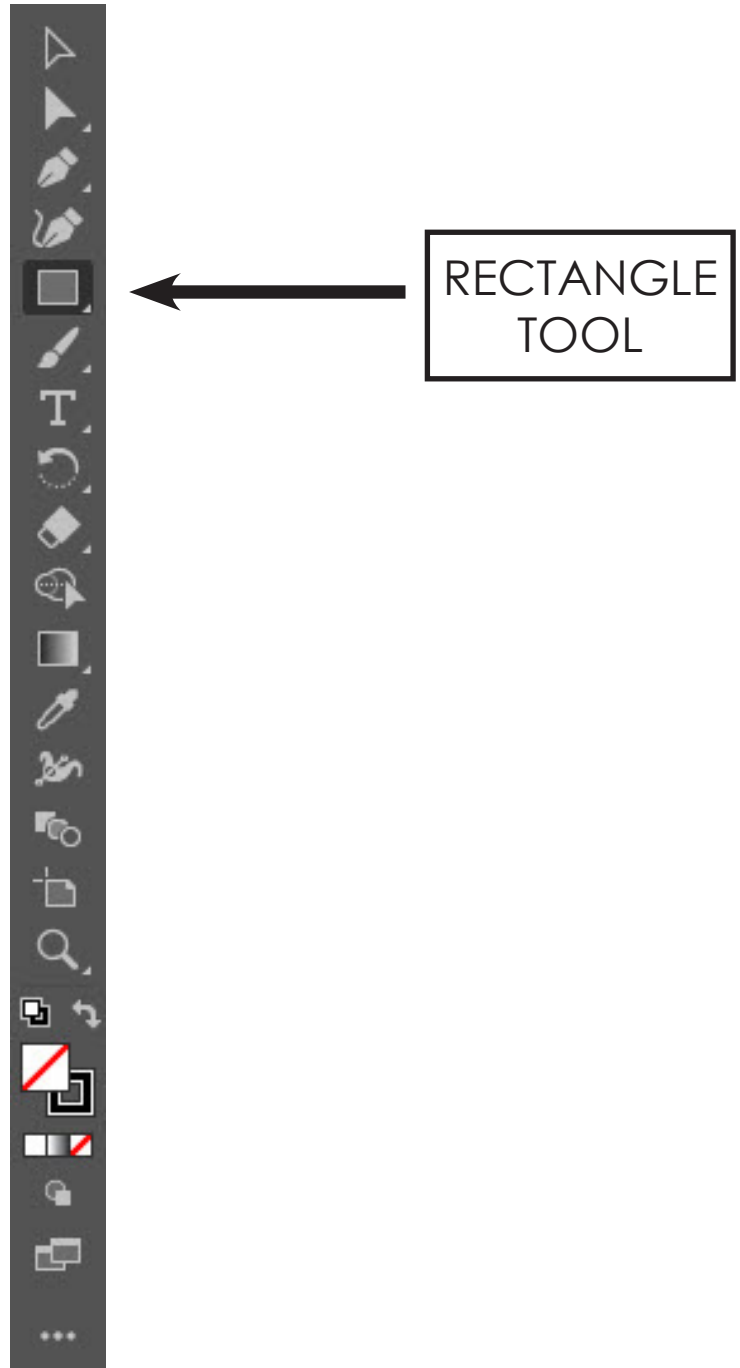
1. Open Adobe Illustrator



2. In the upper toolbar, click FILE, then OPEN. Locate your file, then click OPEN. The white space is called an “Art-board”. You should see your design appear on the Artboard



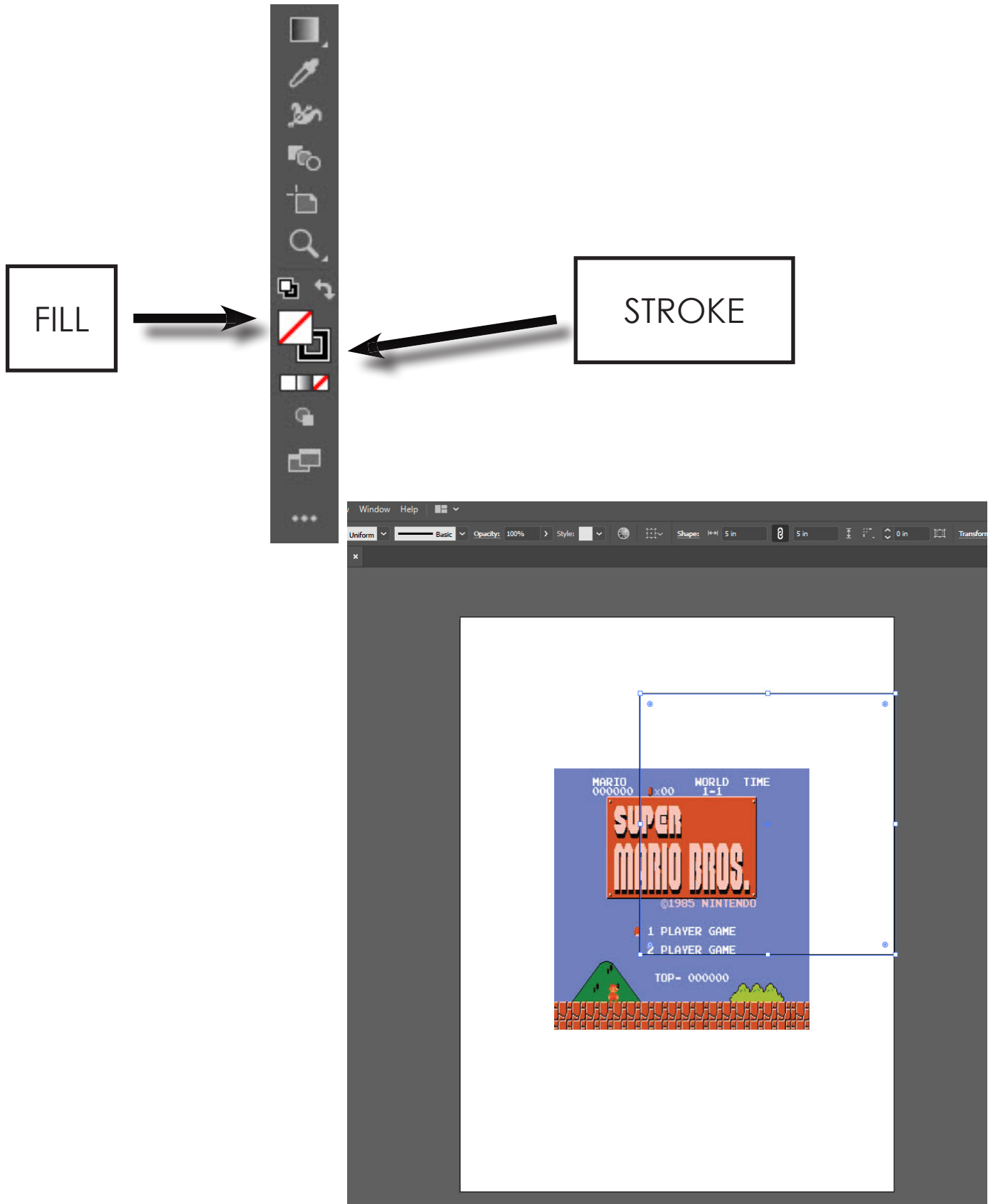
3. On the left toolbar, select the RECTANGLE TOOL



- Click on the Artboard and enter 5 inches for both width and height, then, click OK



5. On the left toolbar, change the “fill” of the square you just made to NO FILL, and the STROKE to black

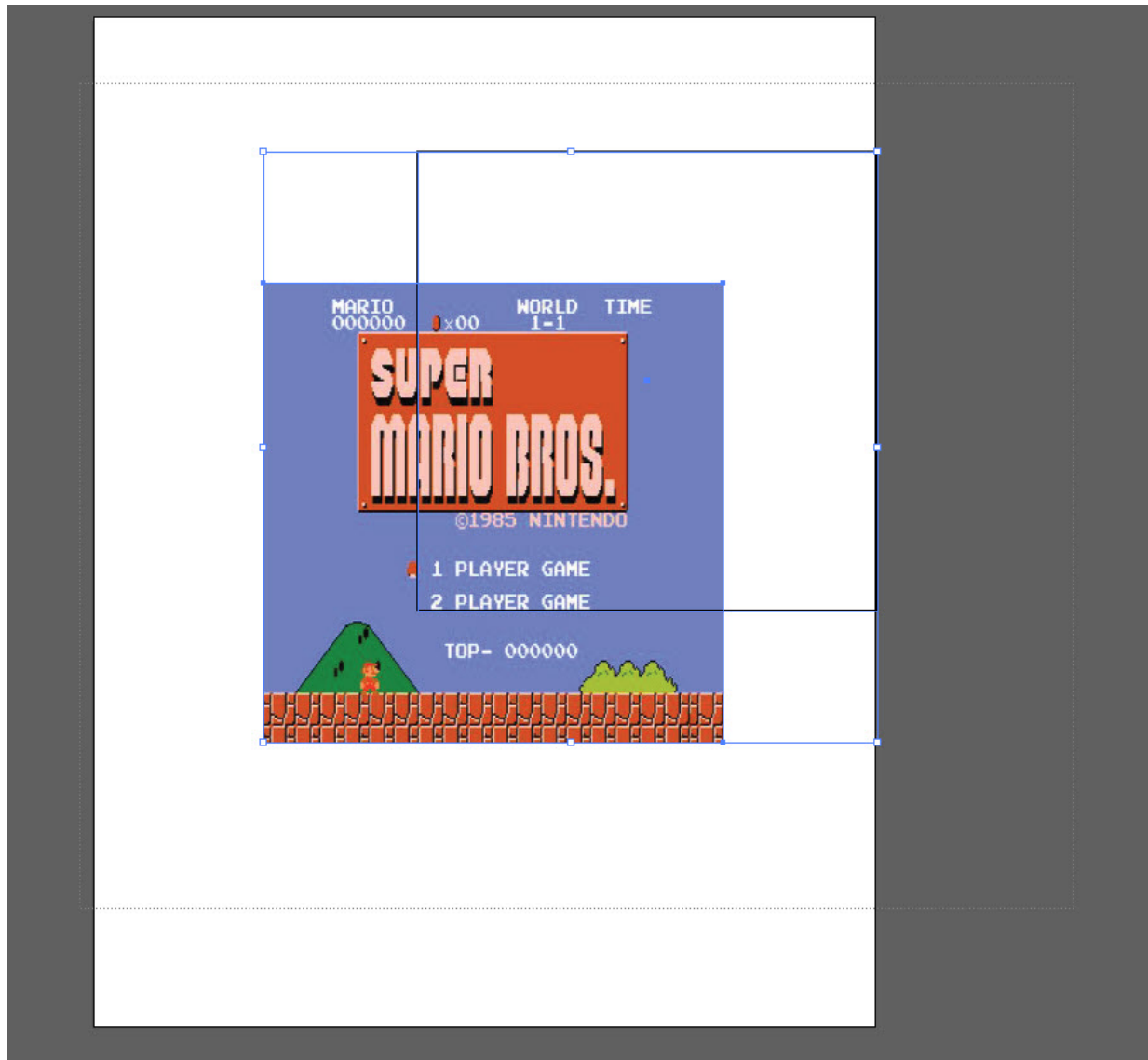




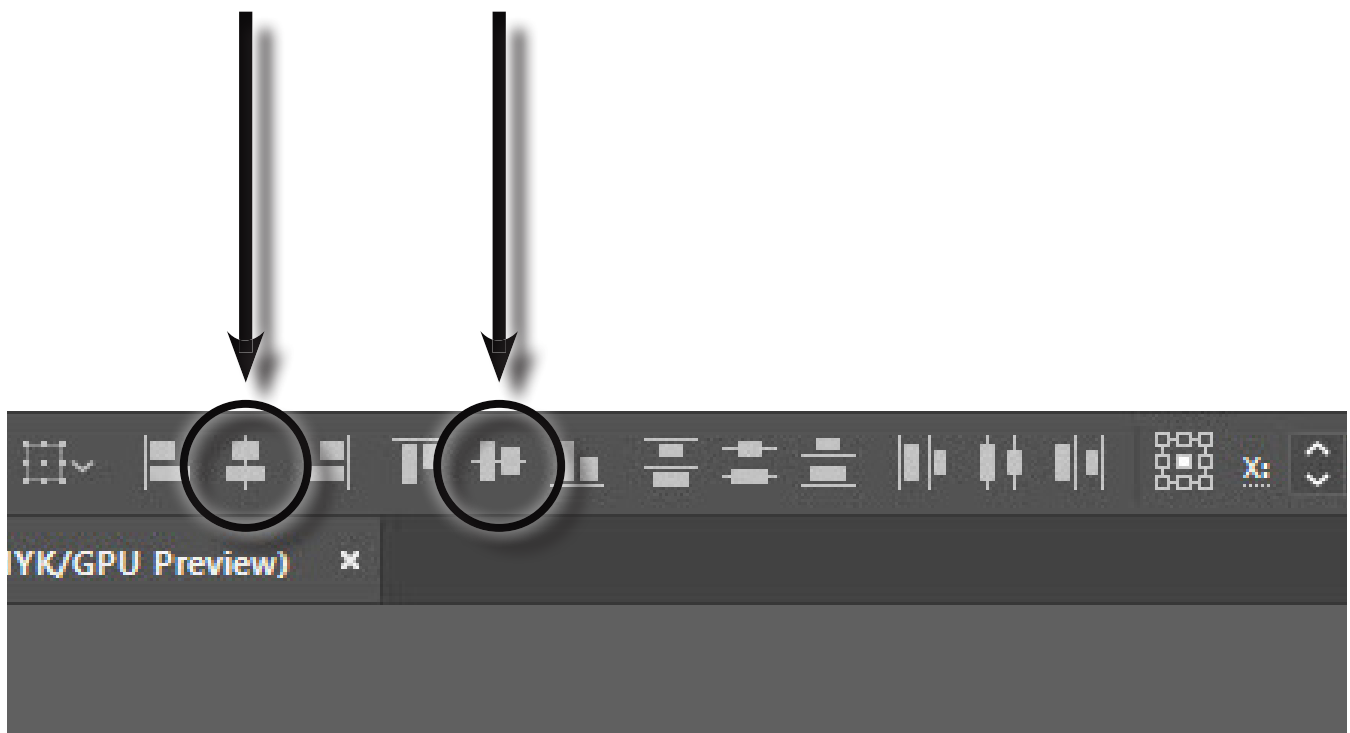
6. On the left toolbar, click on the SELECTION TOOL



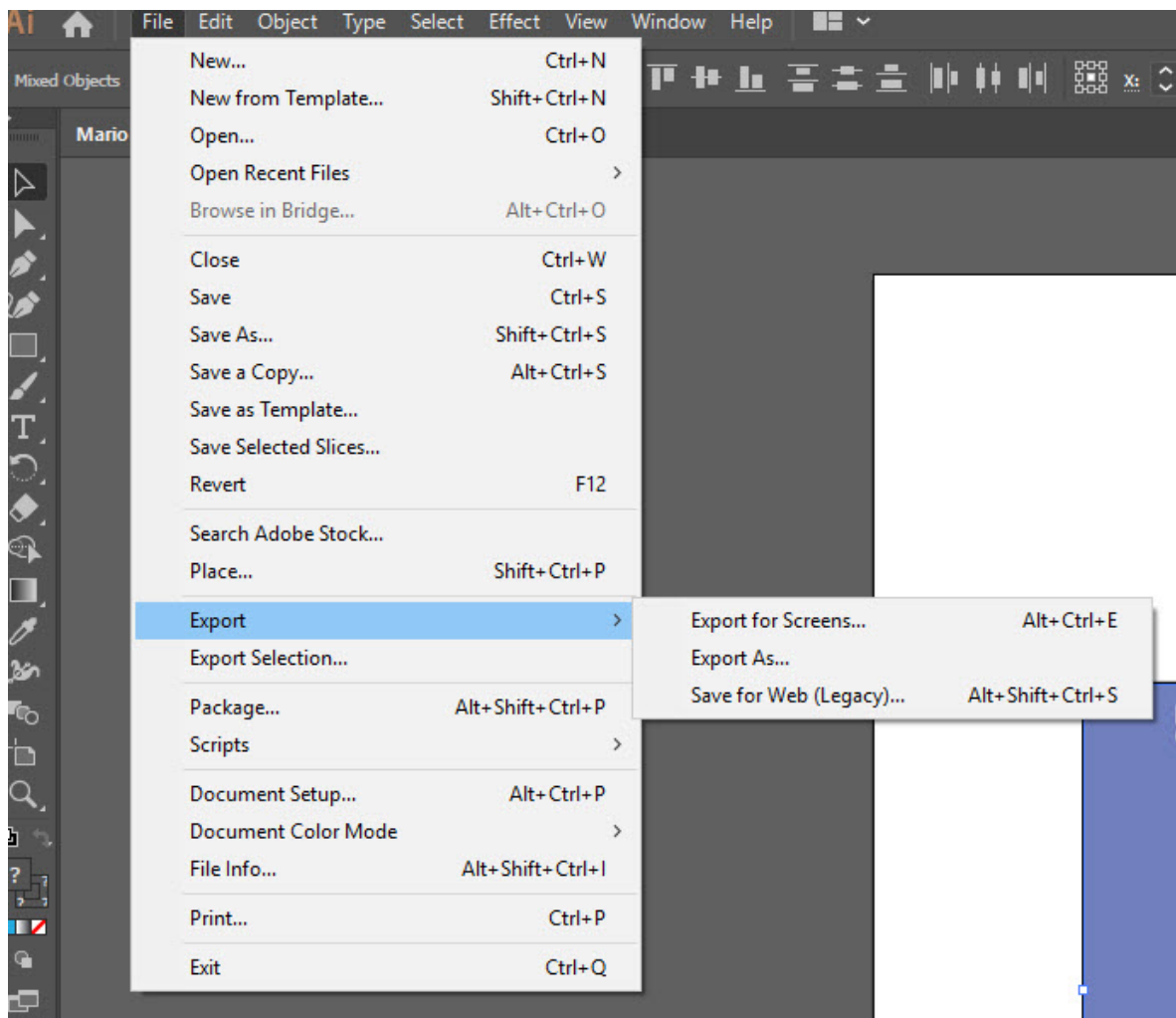
7. Click and drag a bounding-box around both the design and the square you drew, or, press Control + A on the keyboard to select both objects



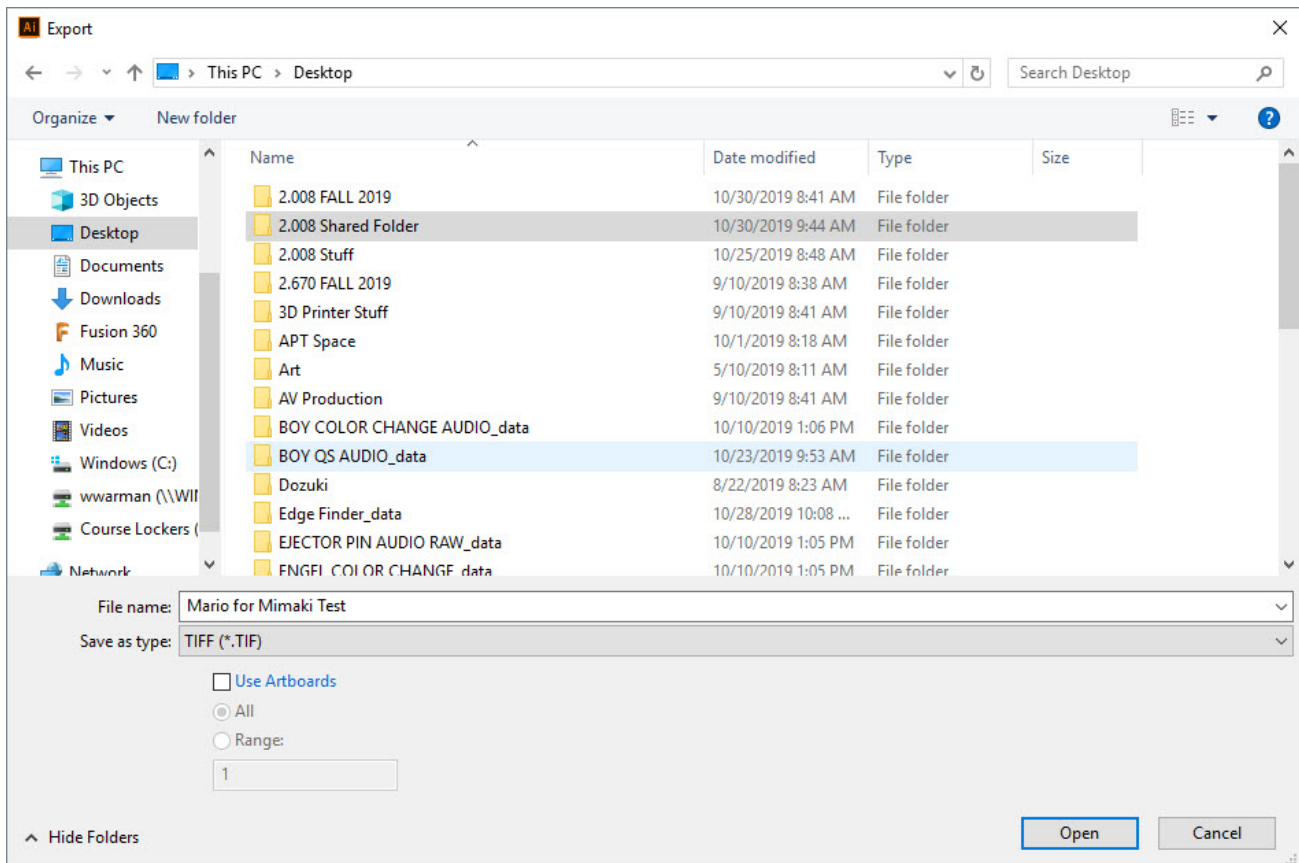
8. In the top toolbar, click the VERTICAL ALIGNB CENTER button and the HORIZONTAL ALIGN CENTER button. This will align your design and the square



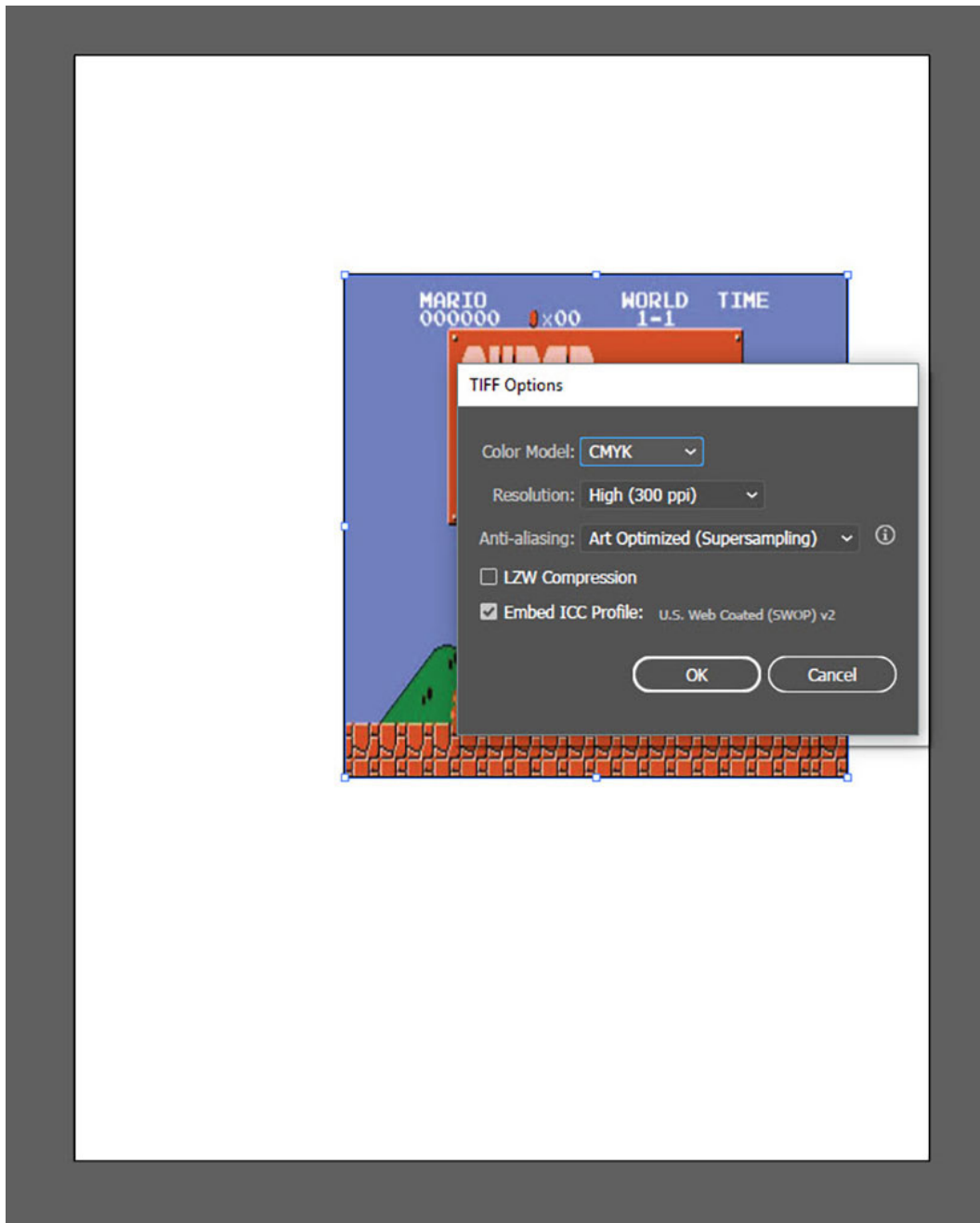
9. Export your file by clicking FILE, then EXPORT, then EXPORT AS. In the SAVE AS TYPE in the save window, select TIFF file type



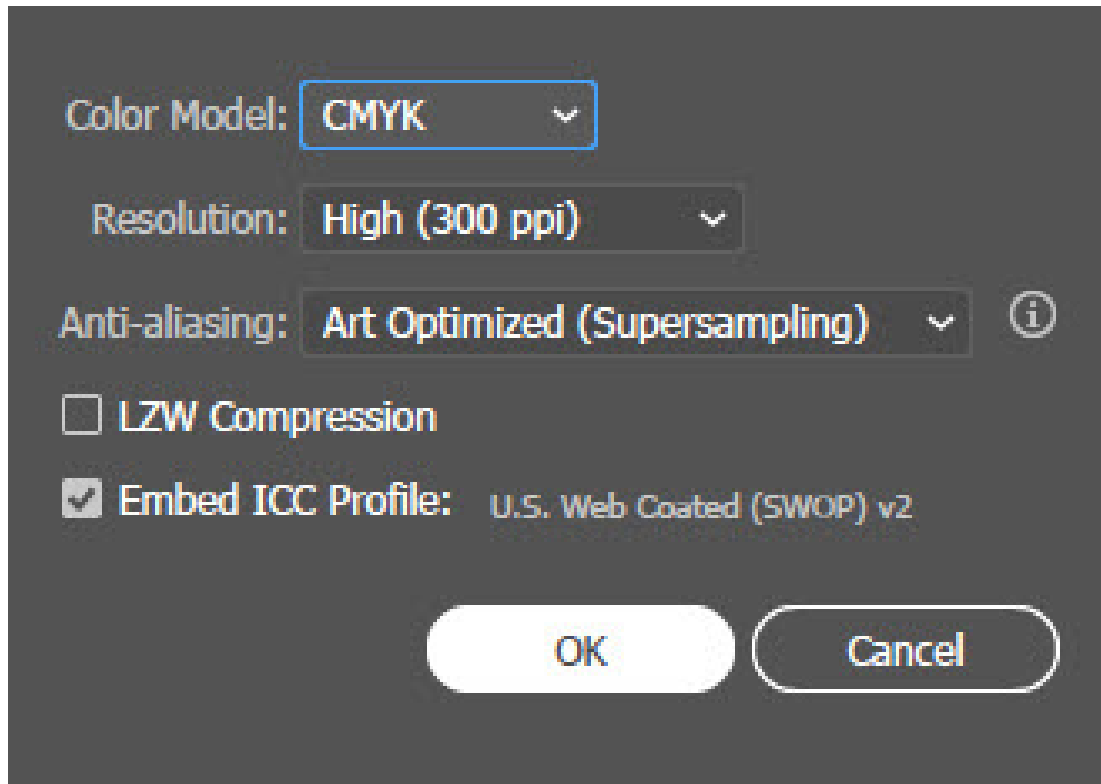
10. In the SAVE AS TYPE in the save window, select TIFF file type and export it the “2.008 Shared Folder” folder on the desktop



11. In the pop-up, make sure the settings are
  - a. Color Mode: CMYK
  - b. Resolution: High (300 dpi)
  - c. Anti-aliasing: Art Optimized



12. Click OK



**IN RASTERLINK**



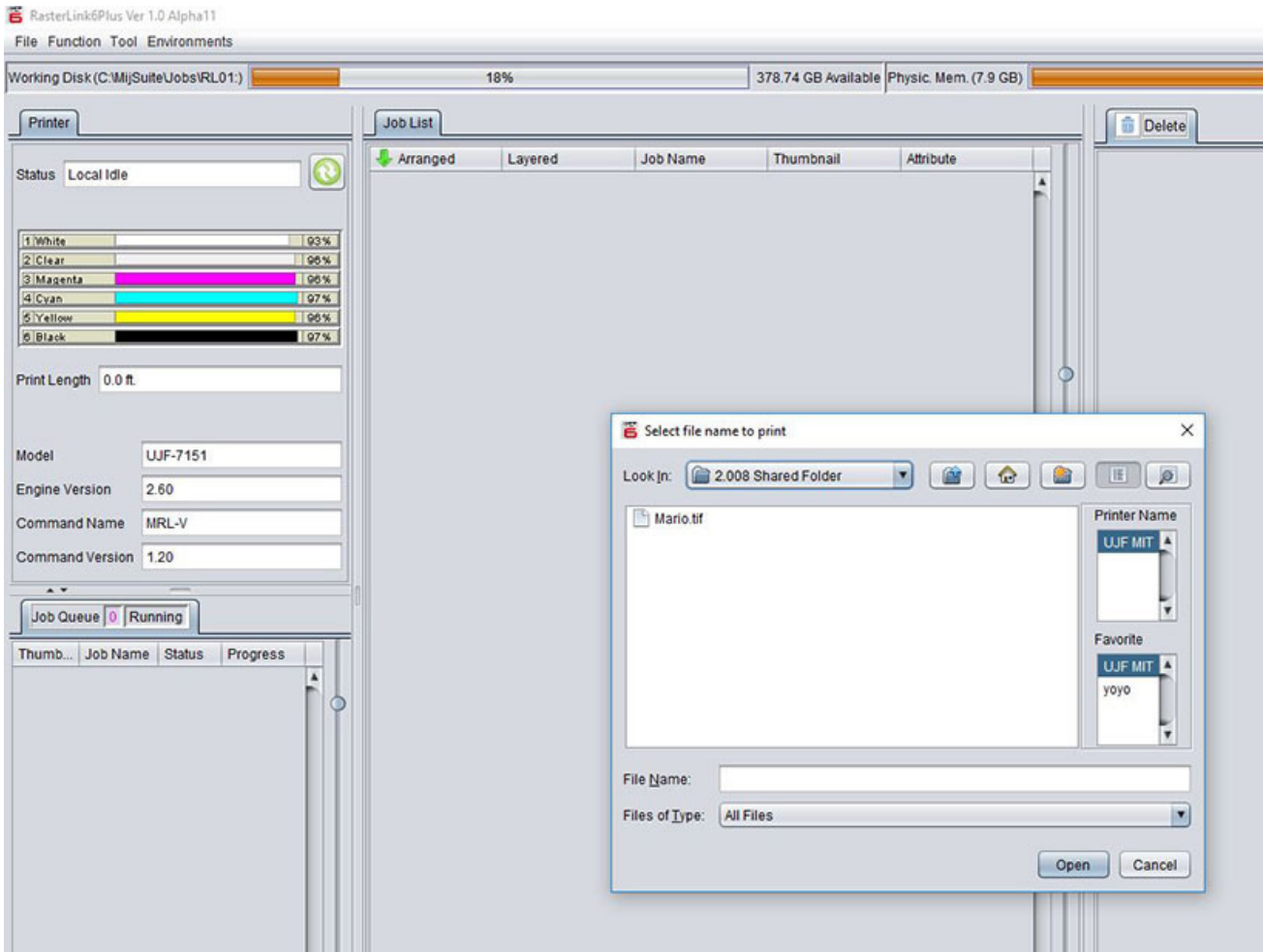
NOTE: Depending on your design, you may need to print with white ink. The Mimaki does not automatically use white ink. Instead, you have to manually set up your print so that it can use white ink. However, if you do not use white ink as a primer layer, the ink may be translucent.

IF YOU DO NOT NEED A WHITE INK

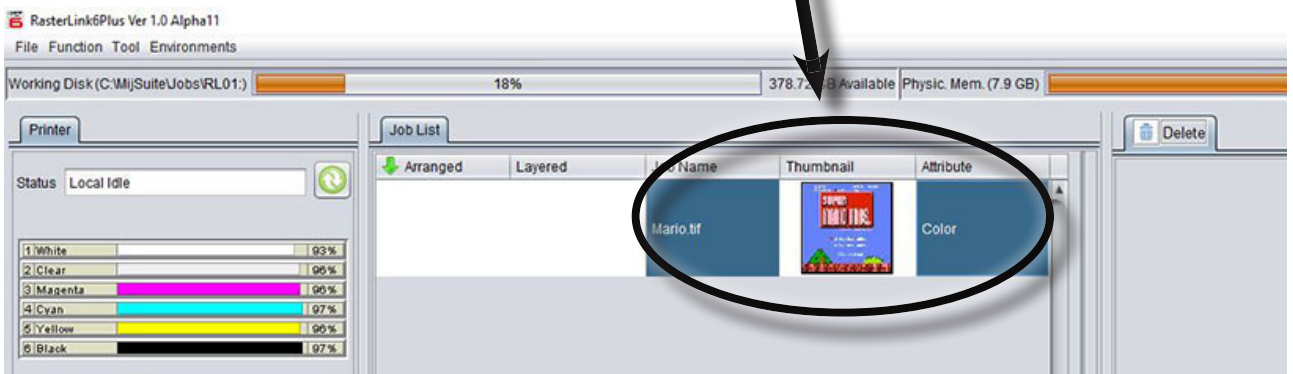
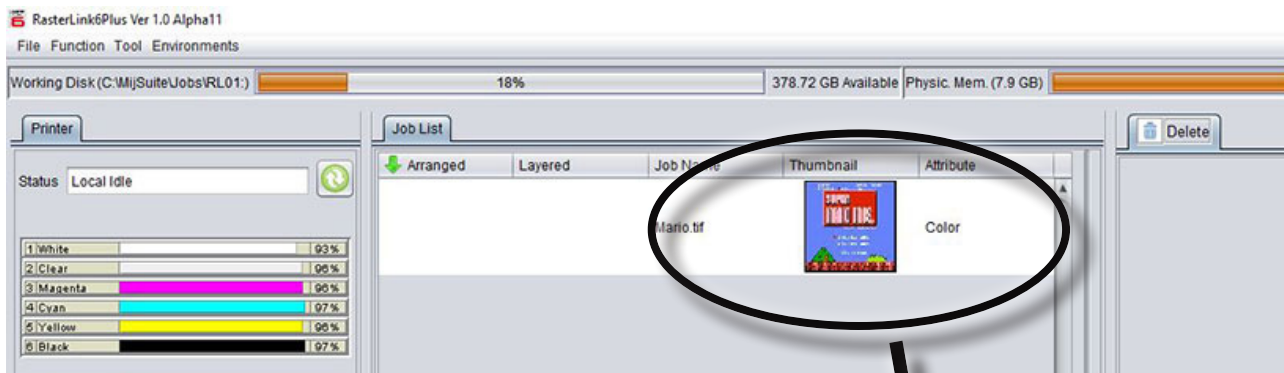
1. Open the Rasterlink software



2. In the upper toolbar, click FILE, then OPEN. Locate your file, then click OPEN



3. In the JOB LIST you will see your design appear. Click on it to activate it



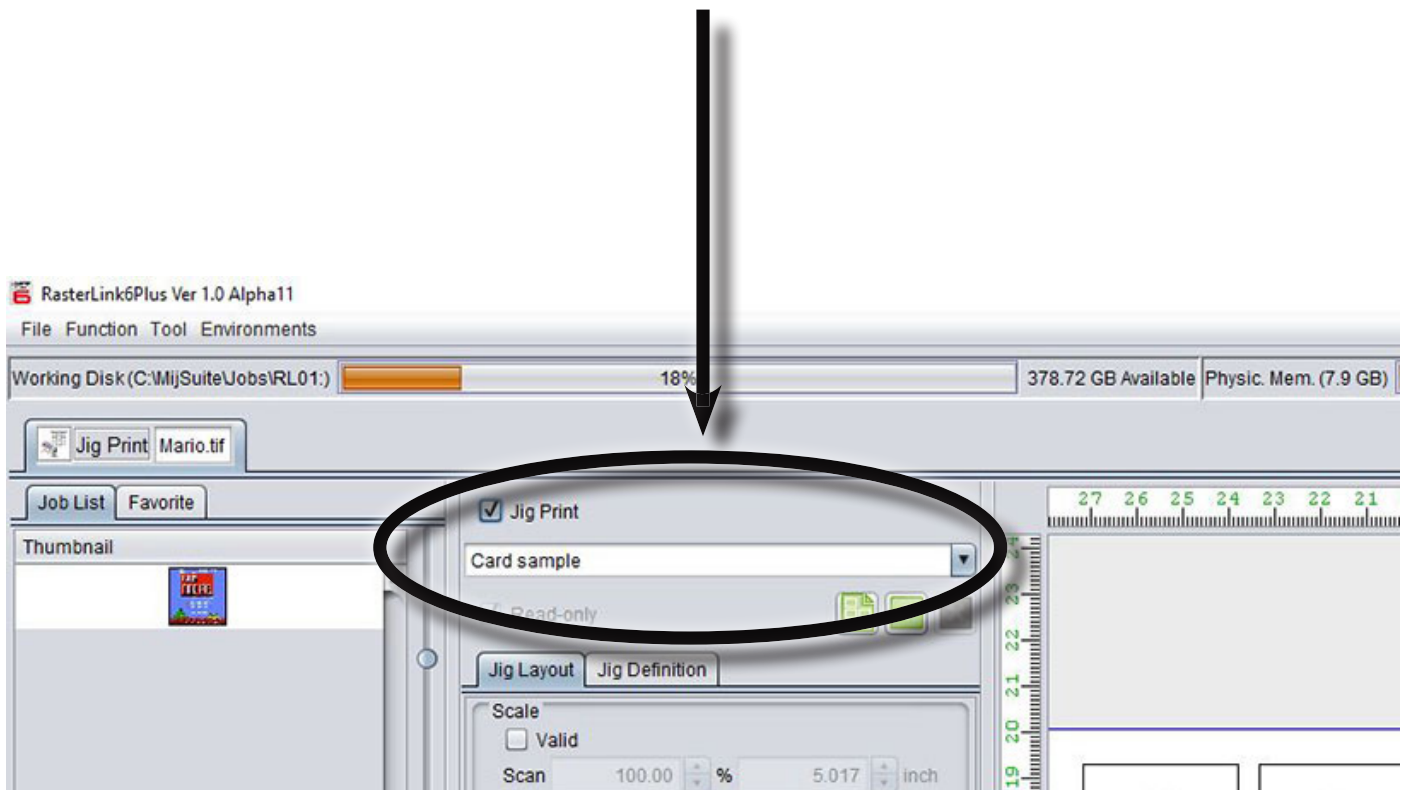
4. Load the jig with thermoformer material. Remember to remove the protective coating if you are using the transparent material



5. On the Right toolbar, click the JIG PRINT Icon

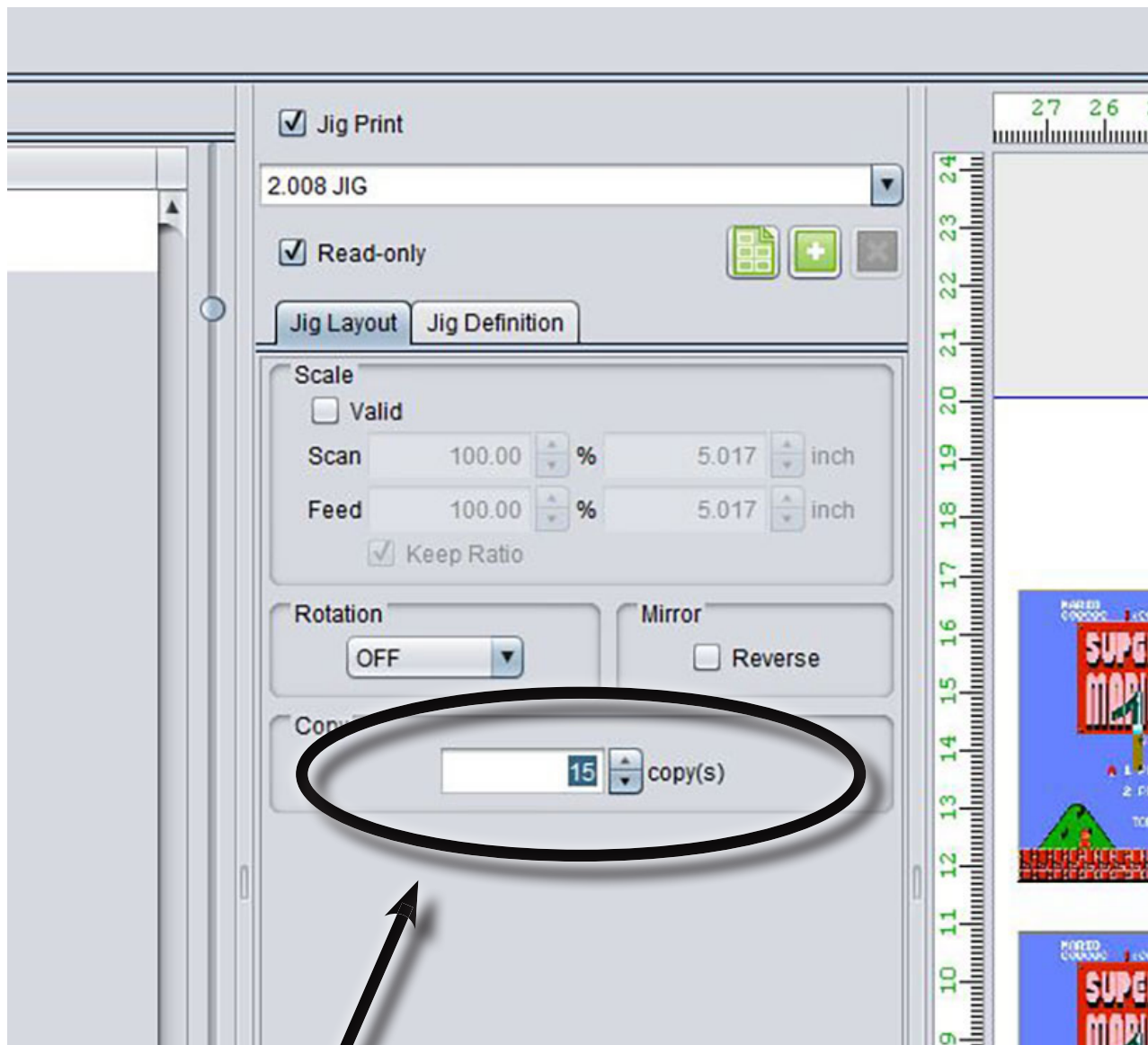


6. In the new screen, click the check box next to JIG PRINT, and in the drop-down menu just below that, select "2.008 JIG"

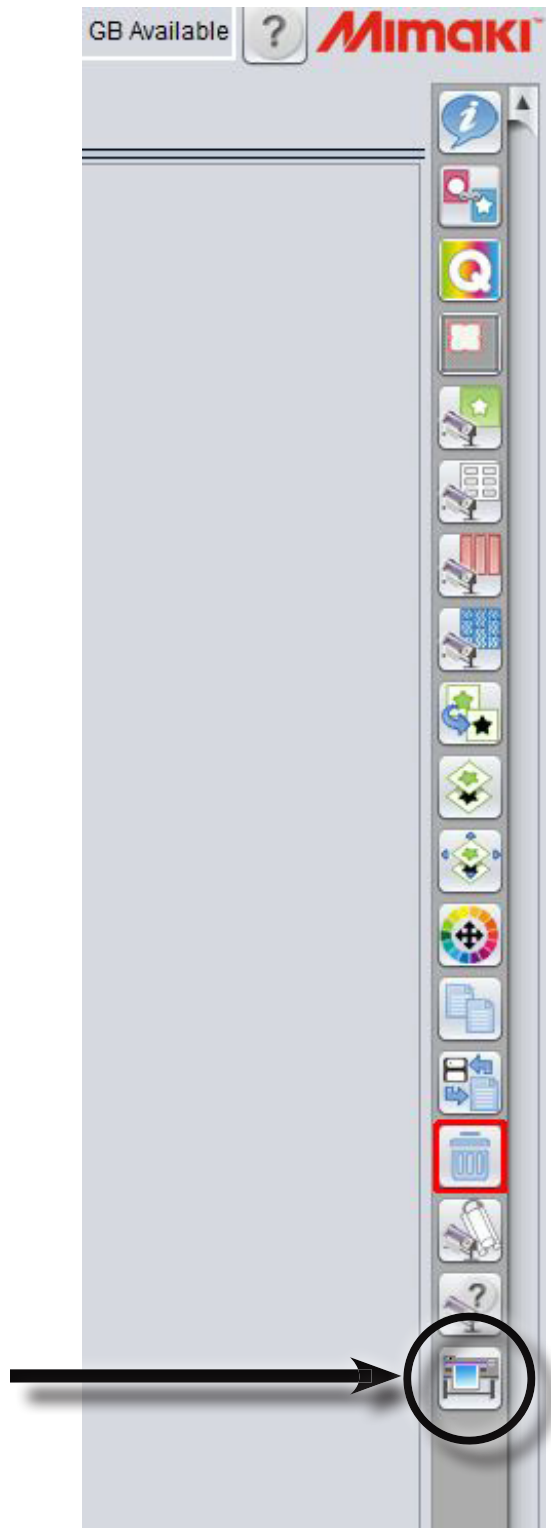




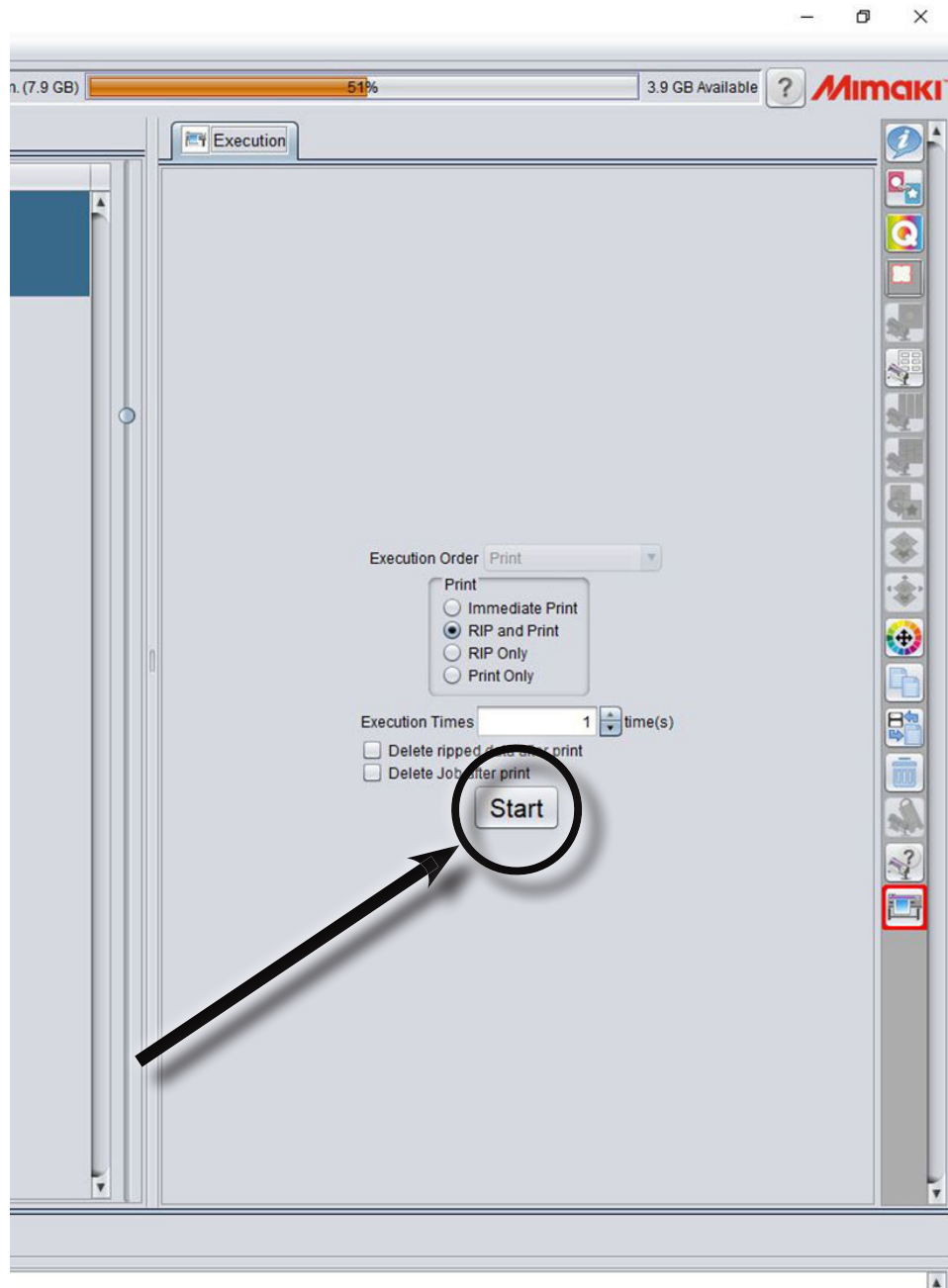
7. In the lower part of the screen, change the Copy number to 15



8. Click the Execution Icon on the right toolbar



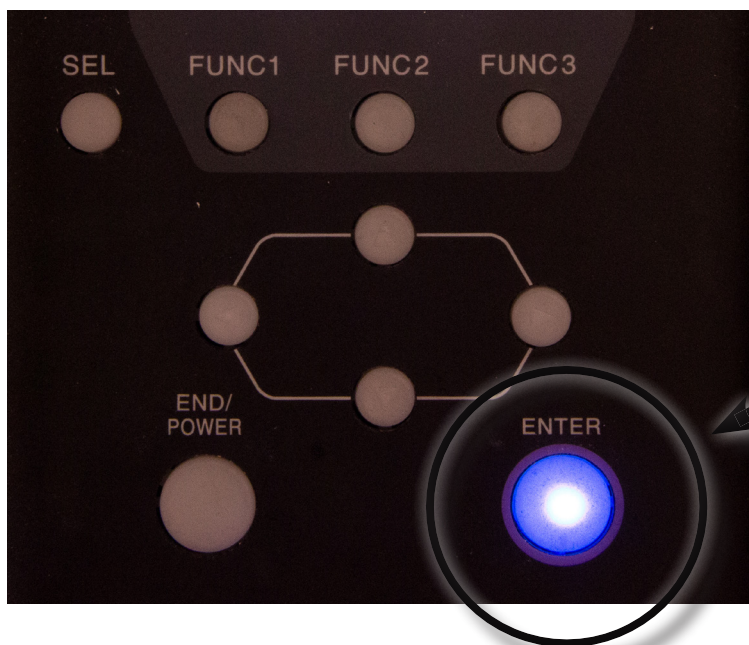
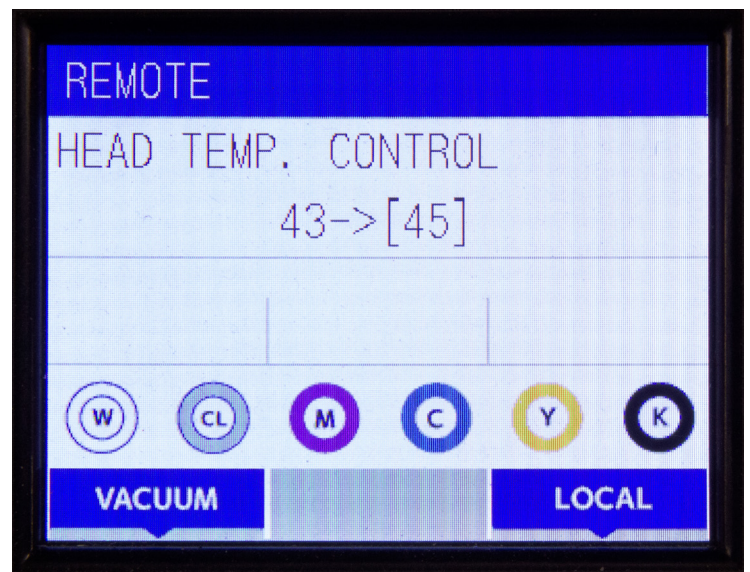
9. In the Execute screen, select RIP AND PRINT. It should be set as default. Click the START button when you are ready



10. On the physical printer, press the FUNC3 button to switch from LOCAL to REMOTE so that the printer can accept the job from the software

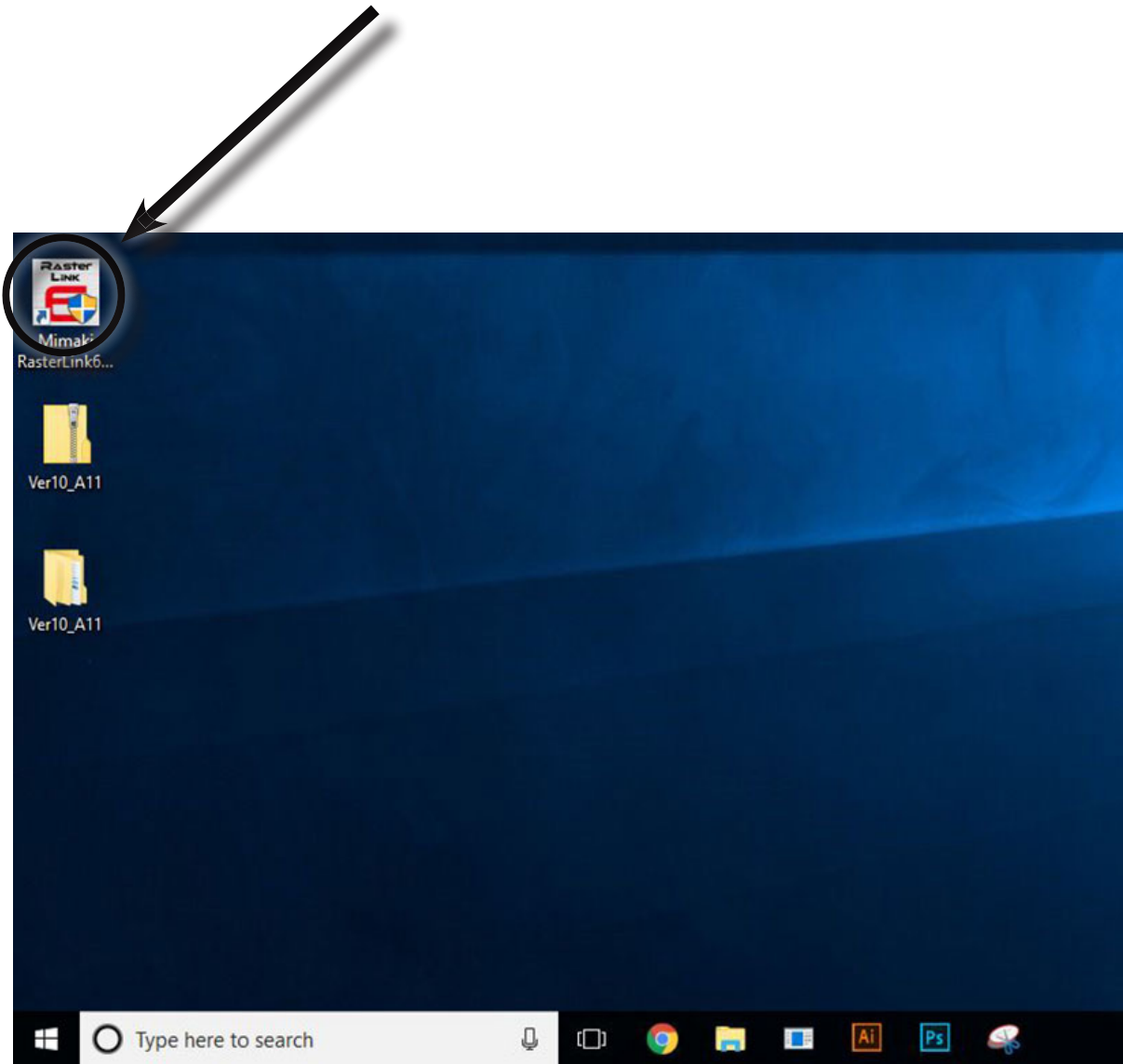


11. The screen on the printer will say "Heating Temp Control 43 → [45]". Press the ENTER button on the control panel of the printer

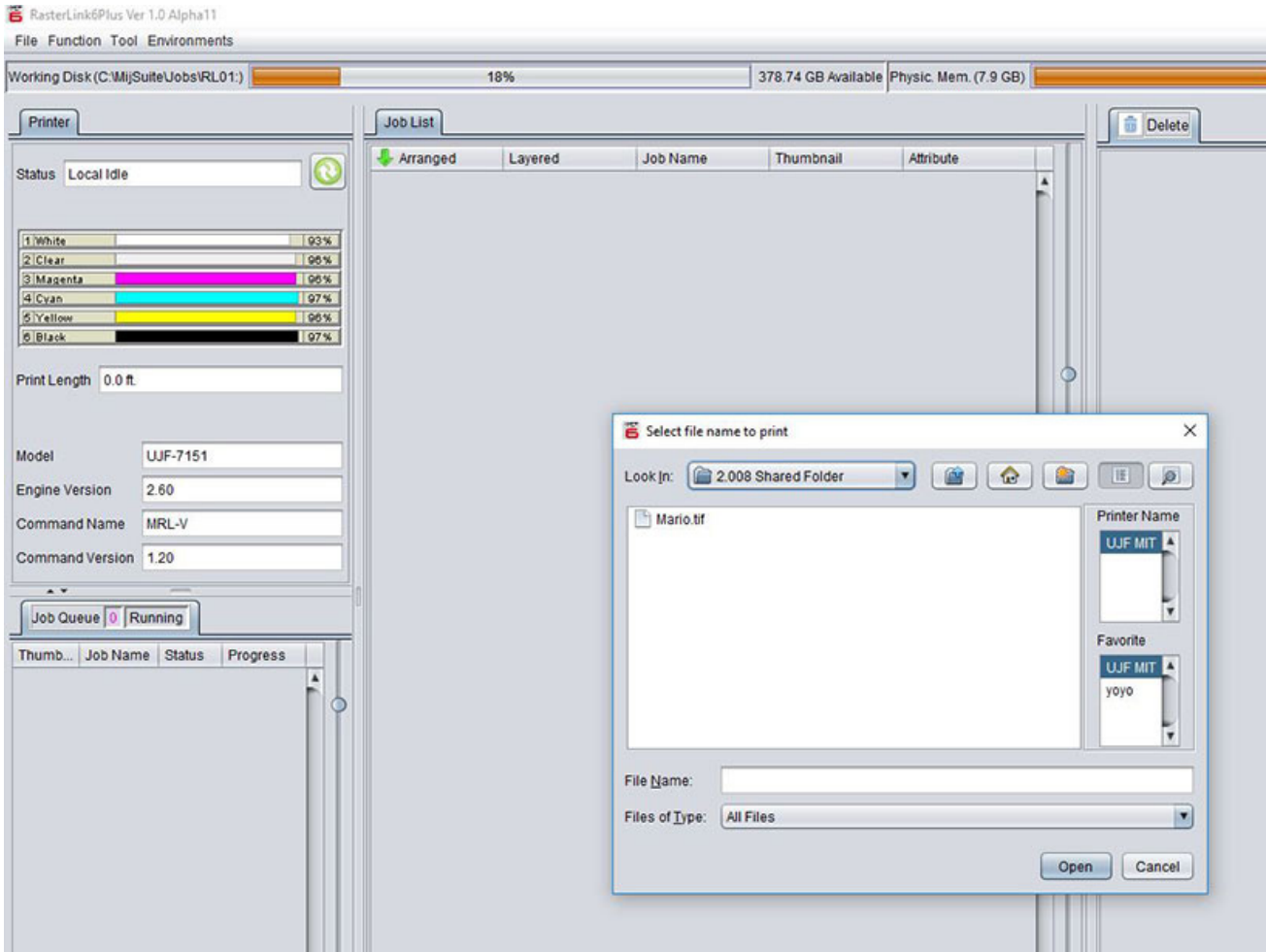


IF YOU DO NEED WHITE INK

1. Open the Rasterlink software

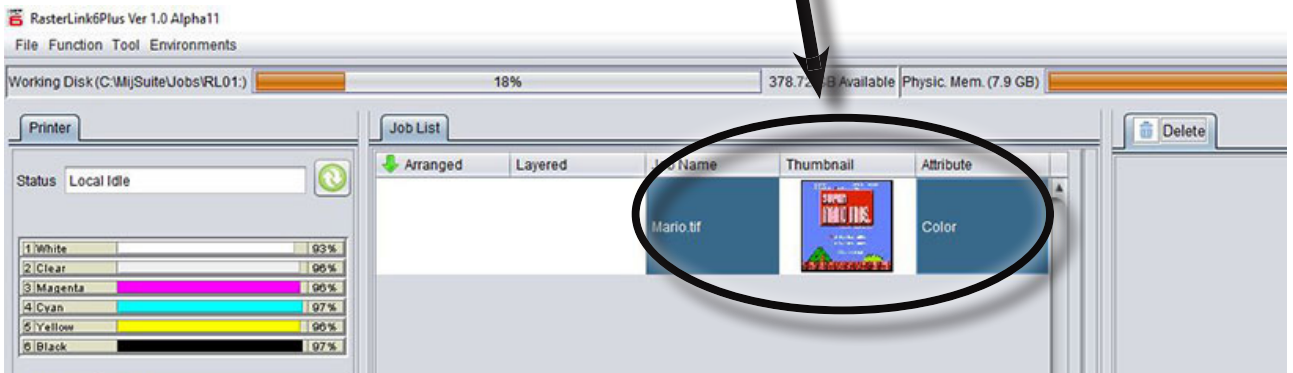
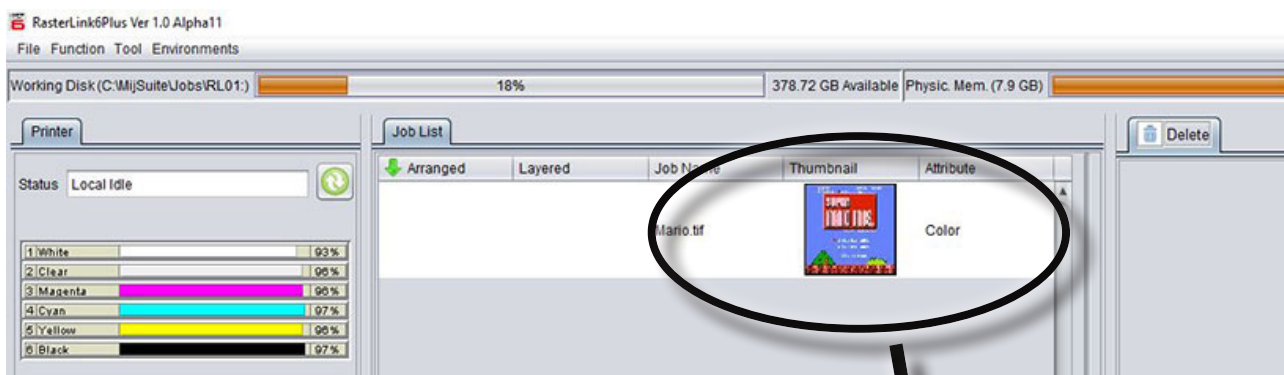


2. In the upper toolbar, click FILE, then OPEN. Locate your file, then click OPEN





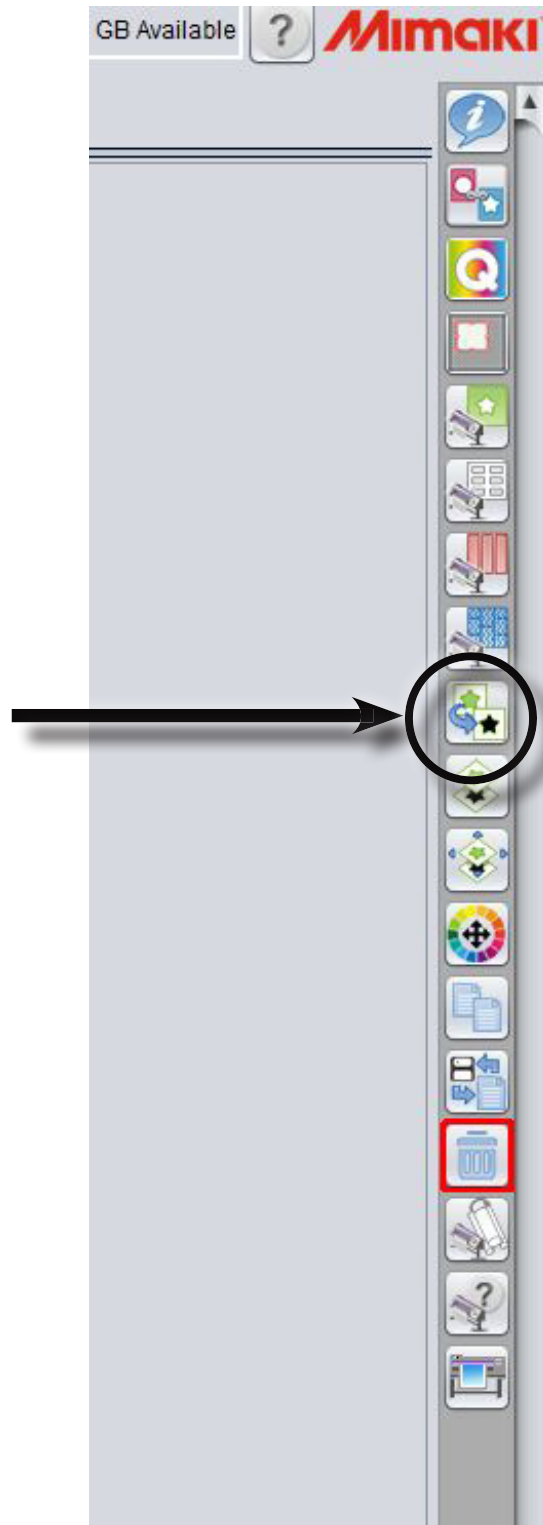
3. In the JOB LIST you will see your design appear. Click on it to activate it



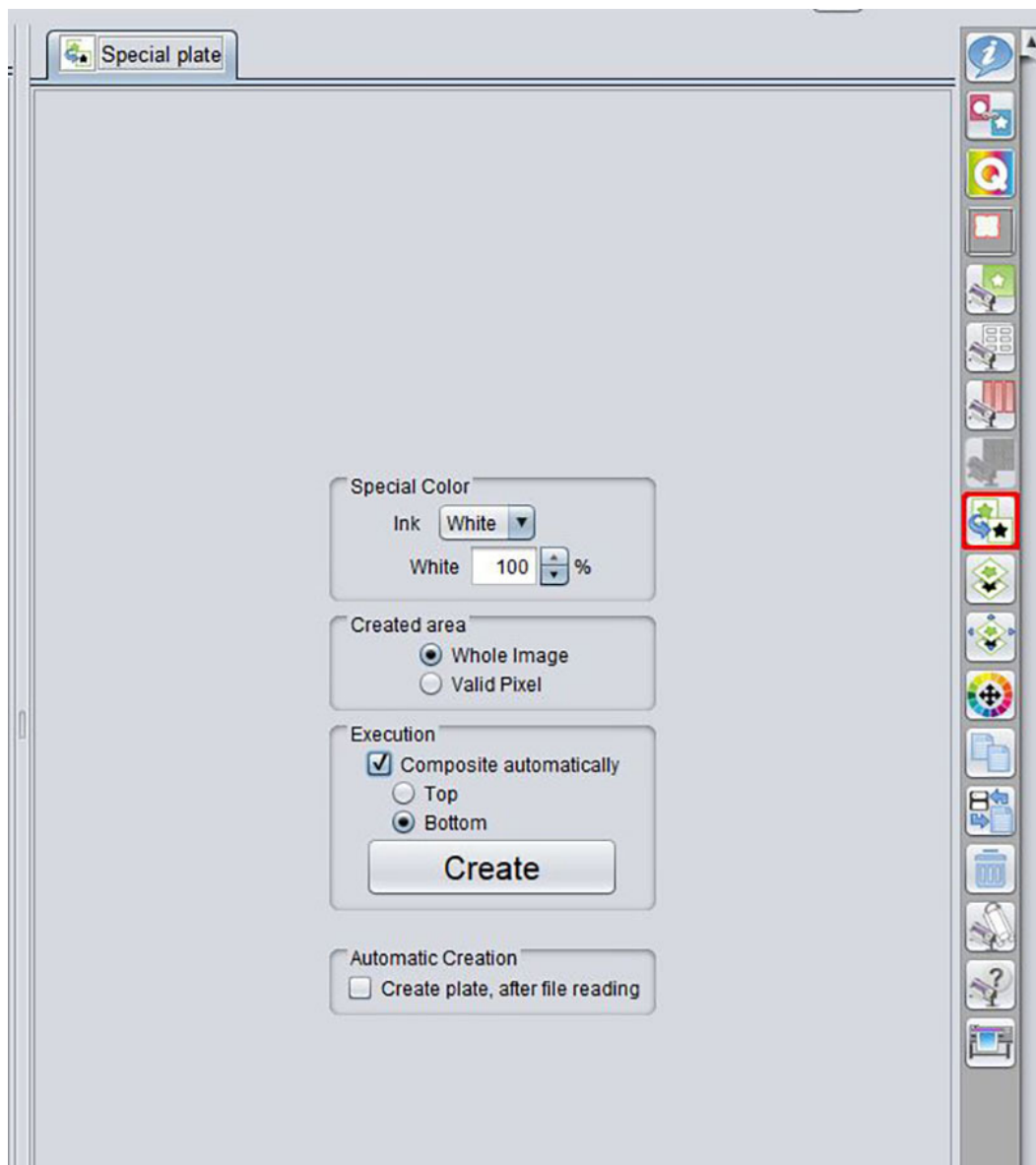
4. Load the jig with thermoformer material. Remember to remove the protective coating if you are using the transparent material



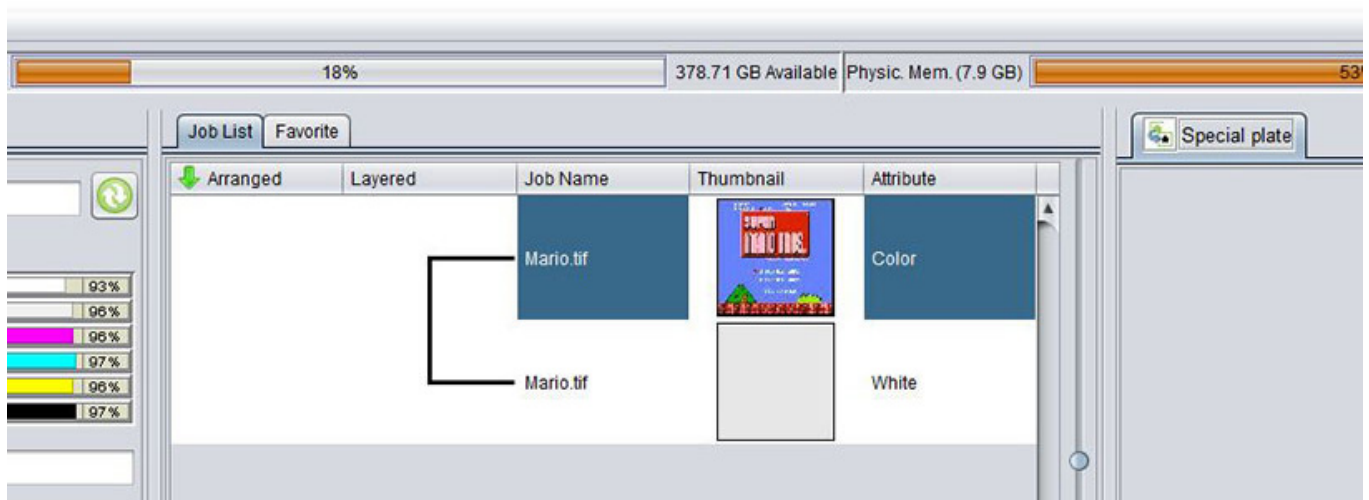
5. On the right toolbar, click the SPECIAL PLATE Icon



6. In the SPECIAL PLATE Screen make sure your settings are correct and match the picture below. When ready, click CREATE.



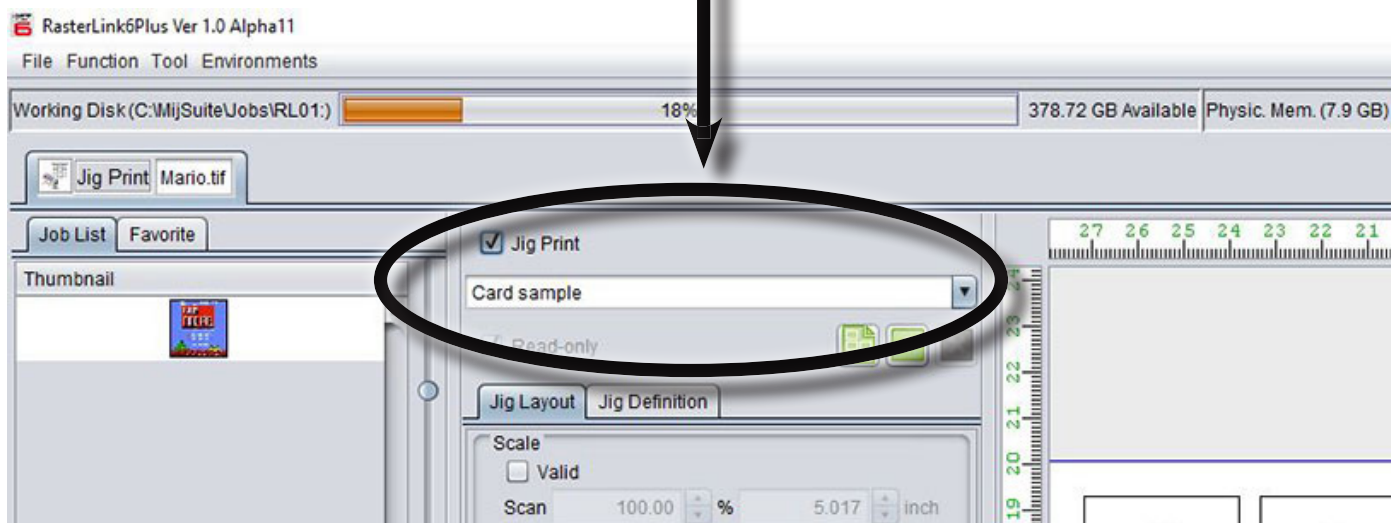
7. In the JOBS LIST, you will now see a new item linked with your original job. The attribute will say WHITE



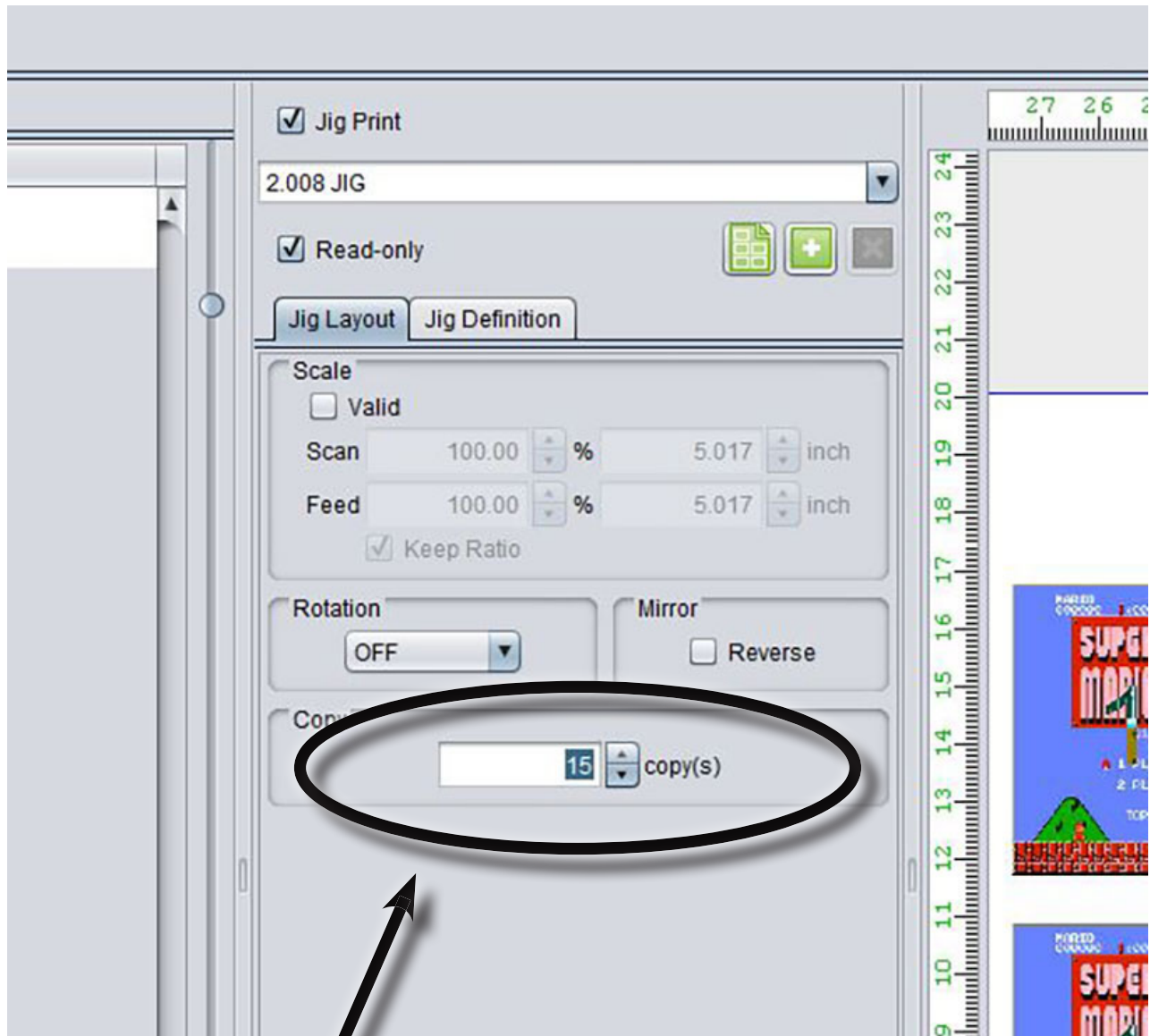
8. On the Right toolbar, click the JIG PRINT Icon



9. In the new screen, click the check box next to JIG PRINT, and in the drop-down menu just below that, select "2.008 JIG"

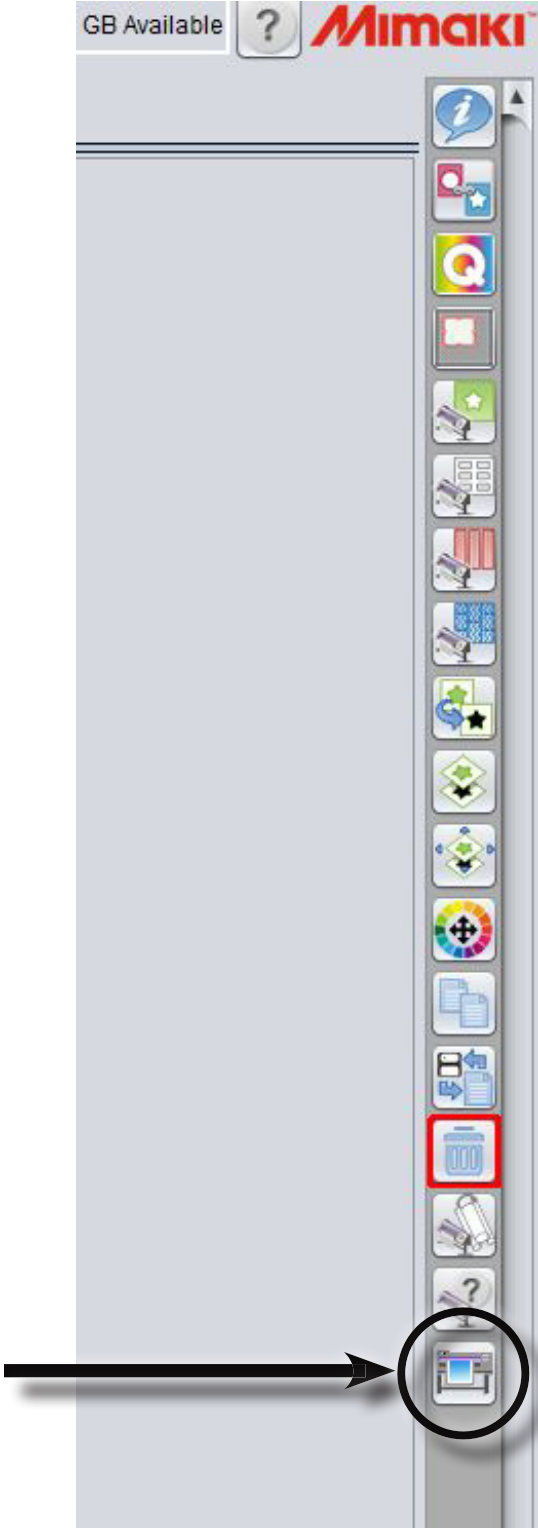


10. In the lower part of the screen, change the Copy number to 15

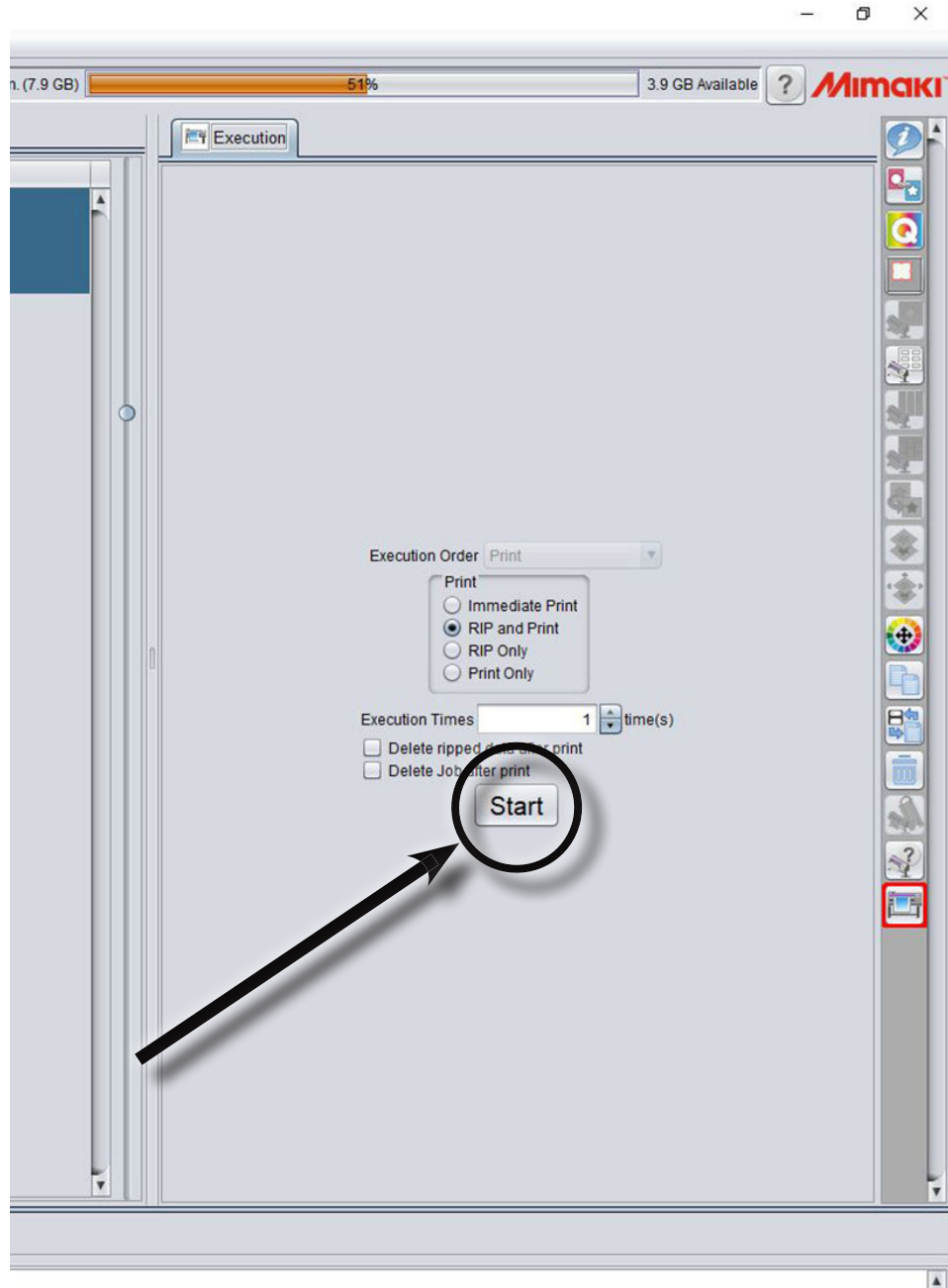




11. Click the Execution Icon on the right toolbar



12. In the Execute screen, select RIP AND PRINT. It should be set as default. Click the START button when you are ready



13. On the physical printer, press the FUNC3 button to switch from LOCAL to REMOTE so that the printer can accept the job from the software



14. The screen on the printer will say "Heating Temp Control 43 → [45]". Press the ENTER button on the control panel of the printer

